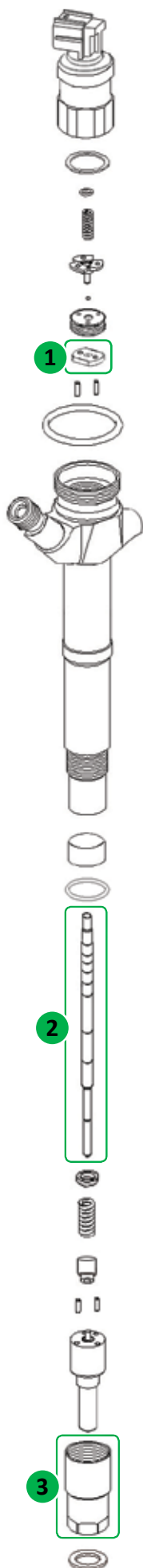
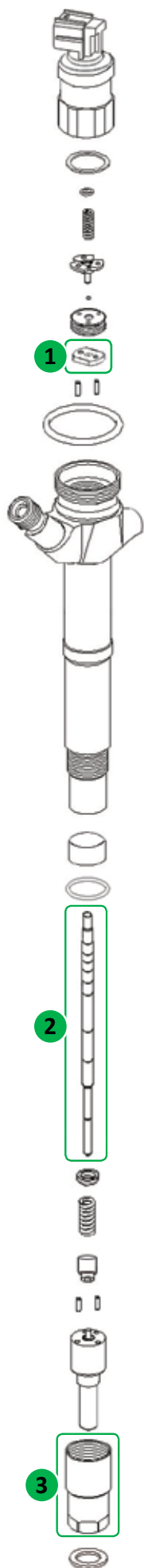


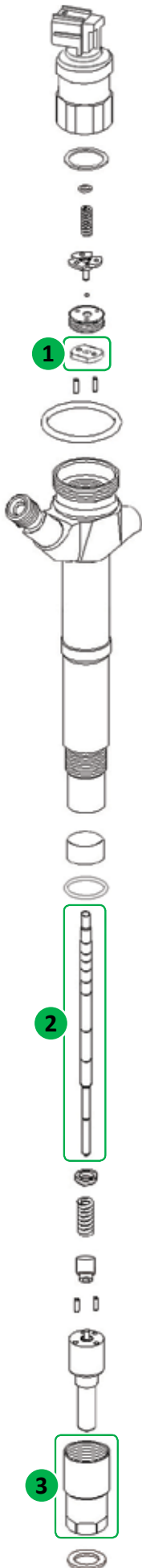
Valvola - Valve ② Pompante - Plunger ③ Dado - Nut



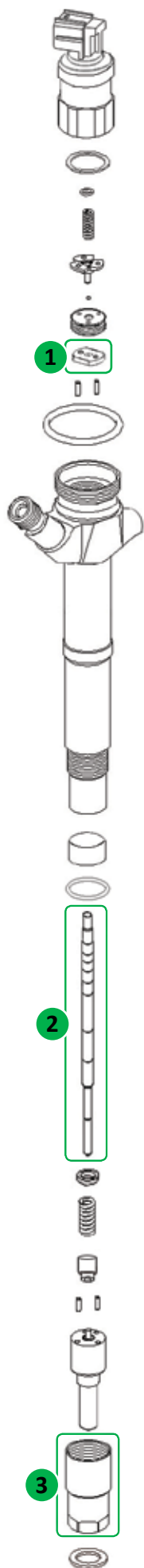
CAR MAKER	MODEL	INJECTOR	RIF. DENSO	VALVE	PLUNGER	NUT
CITROEN	JUMPER					
FIAT	DUCATO	6C1Q-9K546-AC	095000-580#	11-30-001	11-31-001 Versione maggiorata: 11-30-001/1	02-04-210
PEUGEOT	BOXER					
FORD	TRANSIT	6C1Q-9K546-BC	095000-706#	11-30-015	11-31-037 Versione maggiorata: 11-30-037/1	
DONGFENG	XICAI	CA6DL-32	095000-622#	11-30-014	11-31-018 Versione maggiorata: 11-31-018/1	02-04-197
HINO	700-SERIES	23670-E0341	095000-522#	11-30-004	11-31-023 Versione maggiorata: 11-31-023/1	02-04-247
		23670-E0340				
		23910-1240				
HINO	P11C	23910-1252	095000-521#	11-30-012	11-31-020 Versione maggiorata: 11-31-020/1	02-04-247
HINO	J08E	23670-E0010	095000-659#	11-30-004	11-31-024 Versione maggiorata: 11-31-024/1	02-04-248
ISUZU	N-SERIES	8-97329703-1	095000-547#	11-30-006	11-31-006 Versione maggiorata: 11-31-006/1	02-04-245
		8-98151837-0	095000-890#	11-30-006	11-31-006 Versione maggiorata: 11-31-006/1	02-04-209
		8-97603415-#	095000-551#	11-30-006	11-31-013 Versione maggiorata: 11-31-013/1	02-04-209
	GIGA SERIES	8-98030550-0	095000-665#	11-30-006	11-31-013 Versione maggiorata: 11-31-013/1	02-04-209
	FOWARD	8-97609788-#	095000-636#	11-30-011	11-31-006 Versione maggiorata: 11-31-006/1	02-04-209
	D-MAX	8-98011604-5	095000-698#	11-30-008	11-31-035 Versione maggiorata: 11-31-035/1	02-04-210
	NQR75	8-97602485-#	095000-534#	11-30-011	11-31-006 Versione maggiorata: 11-31-006/1	02-04-29



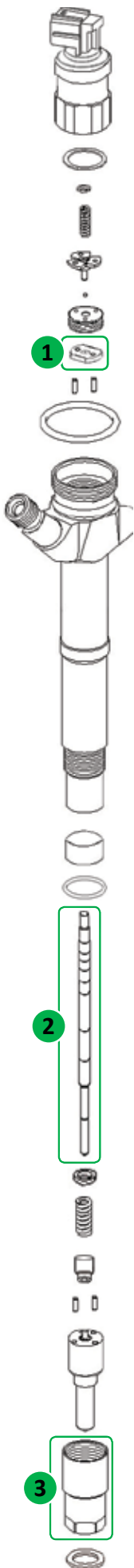
CAR MAKER	MODEL	INJECTOR	RIF. DENSO	VALVE	PLUNGER	NUT
KOBELCO EXCAVATOR	SK200-8	23670-E0050	095000-635#	11-30-004	11-31-024 Versione maggiorata: 11-31-024/1	02-04-248
	SK260-8					
MAZDA	3	RF7J13H50	095000-578#	11-30-015	11-31-012 Versione maggiorata: 11-31-012/1	02-04-234
	5					
	6					
MAZDA	MPV	RF5C13H50A	095000-503#	11-30-004	11-31-004 Versione maggiorata: 11-31-004/1	02-04-234
	6		095000-785#			
MAZDA	3	R2AA13H50	295050-001#	11-30-007	11-31-017 Versione maggiorata: 11-31-017/1	02-04-210
	6					
	CX-7					
MITSUBISHI	L200	1465A041	095000-560#	11-30-018	11-31-011 Versione maggiorata: 11-31-011/1	02-04-210
MITSUBISHI	PAJERO MONTERO	1465A054	095000-576#	11-30-003	11-31-003 Versione maggiorata: 11-31-003/1	02-04-210
NISSAN	NAVARA	16600-EC00# 16600-EB30#	095000-625#	11-30-010	11-31-021 Versione maggiorata: 11-31-021/1	02-04-210
	PATHFINDER		095000-565#			
NISSAN	ALMERA	16600-AW40# 16600-BN80#	095000-513#	11-30-008	11-31-025 Versione maggiorata: 11-31-025/1	02-04-210
	PRIMERA		095000-518#			
	X-TRAIL					
NISSAN	X-TRAIL	16600-ES60A	095000-602#	11-30-008	11-31-008 Versione maggiorata: 11-31-008/1	02-04-210
	CABSTAR	16600-MB40#	095000-624#		11-31-021 Versione maggiorata: 11-31-021/1	
NISSAN	PRIMERA	16600-AU600	095000-088#	11-32-001	11-31-030 Versione maggiorata: 11-31-030/1	
OPEL	ASTRA	8-97376270-1	095000-613#	11-30-016	11-31-007 Versione maggiorata: 11-31-007/1	02-04-235
	CORSA					
	MERIVA					
	ZAFIRA					
OPEL	COMBO	8-97313861-2	095000-508#	11-30-020	11-31-010 Versione maggiorata: 11-31-010/1	02-04-235
	CORSA					
	MERIVA					



CAR MAKER	MODEL	INJECTOR	RIF. DENSO	VALVE	PLUNGER	NUT	
OPEL	SIGNUM	8-97353080-0	095000-583#	11-30-008	11-31-016	02-04-210	
	VECTRA						
	RENAULT						
RENAULT	ESPACE	8-97239161-7	095000-036#	11-32-001	Versione maggiorata: 11-31-016/1	02-04-211	
SAAB	VEL SATIS						
SAAB	9-5						
SAAB	9-6	RE501010	095000-055#	11-32-002	11-31-032	Versione maggiorata: 11-31-032/1	
OPEL	SIGNUM						
OPEL	VECTRA						
RENAULT	ESPACE	RE529117	095000-650# 095000-872#	11-32-004	11-31-036	Versione maggiorata: 11-31-036/1	
SAAB	VEL SATIS						
SAAB	9-5						
SAAB	9-6	801*	095000-801#	11-30-013	11-31-014	Versione maggiorata: 11-31-014/1	
SINOTRUCK	-						
SINOTRUCK	HOWO	670*	095000-670#	11-30-013	11-31-019	Versione maggiorata: 11-31-019/1	
SINOTRUCK	HOWO	810*	095000-810#				
SUBARU	IMPREZA	16613AA020	095000-789#				11-30-004
SUBARU	FORESTER						
SUBARU	LEGACY						
SUBARU	OUTBACK						
TOYOTA	DYNA 200 (HINO)	23670-79026 23670-E0091	095000-652#	11-30-008	11-31-015	Versione maggiorata: 11-31-015/1	
	AVENSIS	23670-0R160	095000-761#	11-30-019	11-31-002	Versione maggiorata: 11-31-002/1	
		23670-09260					
		23670-0R110	095000-725#				
		23670-09200					
		23670-0R060	095000-690#				
		23670-09200					
		23670-0R010	095000-561#				
		23670-09130	095000-611#				
		23670-0G040	095000-758#				
		23670-09250					
		23670-0G030	095000-722#				
		23670-09220					
		23670-0G020					095000-689#
		23670-0G010					
23670-09030	095000-542#						



				1	2	3
CAR MAKER	MODEL	INJECTOR	RIF. DENSO	VALVE	PLUNGER	NUT
TOYOTA	HILUX (2.5) LAND CRUISER HILUX (3.0) HIACE	23670-30280	095000-778# 095000-829# 095000-592#	11-30-005	11-31-005 <i>Versione maggiorata: 11-31-005/1</i>	02-04-233
		23670-30281				
		23670-39315				
		23670-39316				
		23670-09330				
		23670-09070				
		23670-30220	095000-741#			
		23670-39215				
		23670-30140	095000-676#			
		23670-39185	095000-703#			
		23670-30320	095000-773# 095000-736# 095000-687# 095000-574# 095000-589#			
		23670-39295				
		23670-30210				
		23670-39155				
		23670-30180				
		23670-30080				
		23670-39135	095000-776# 095000-874#			
		23670-30300				
		23670-09360	095000-619#			
		23670-39275				
		23670-30100	095000-739# 095000-775#			
		23670-30240				
		23670-0L070	095000-552# 095000-593#			
23670-0L011						
23670-39235	095000-780#					
23670-0L010						
23670-09060	095000-743#					
23670-30310						
23670-39285	095000-677#					
23670-30250						
23670-39245	095000-704#					
23670-30150						
23670-39145	11-32-001					
23670-30010		11-31-027 <i>Versione maggiorata: 11-31-027/1</i>				
23670-30020						
23670-39015						
23670-39025						
23670-30070	095000-652#	11-30-005	11-31-027 <i>Versione maggiorata: 11-31-027/1</i>			
TOYOTA	AVENIS "AVENIS VERSO" PREVIA	23670-27030	095000-057#	11-32-001	11-31-029 <i>Versione maggiorata: 11-31-029/1</i>	02-04-211
		23670-29035	095000-042#			
	COROLLA "COROLLA VERSO"	23670-27020	095000-043#			
		23670-29025	095000-064#			
	4RUNNER DYNA HIACE HILUX	23670-30030	095000-077#			
		23670-30040	095000-063#			
23670-39035		095000-094#				
		23670-39045	095000-095#		11-31-029 <i>Versione maggiorata: 11-31-029/1</i>	



CAR MAKER	MODEL	INJECTOR	RIF. DENSO	VALVE	PLUNGER	NUT	
TOYOTA	AVENSIS AURIS COROLLA "COROLLA VERSO" RAV4	23670-0R180	095000-769#	11-30-017	11-31-002 <i>Versione maggiorata: 11-31-002/1</i>	02-04-233	
		23670-09270					
		23670-0R130					
		23670-09230					
		23670-0R050					
	23670-09190	095000-697#					
TOYOTA	LAND CRUISER 200	23670-51030	095000-770#	-	11-31-002	02-04-233	
		23670-59035	095000-771#				
		23670-51020A	095000-673#				
		23670-59025	095000-753#				
		23670-51041	095000-977#				
	TOYOTA	AVENSIS AURIS COROLLA COROLLA VERSO RAV4	23670-0R180	095000-769#	11-30-017	11-31-002 <i>Versione maggiorata: 11-31-002/1</i>	02-04-233
			23670-09270				
			23670-0R130				
			23670-09230				
			23670-0R050				
	23670-09190	095000-697#					
TOYOTA	AURIS AVENSIS COROLLA	23670-0R190	095000-767#	11-30-009	11-31-002 <i>Versione maggiorata: 11-31-002/1</i>	02-04-233	
		23670-09280					
		23670-0R140					
		23670-09240					
		23670-0R030					
	23670-09180	095000-696#					
TOYOTA	COROLLA VERSO RAV4	23670-0R170	095000-764#	11-30-002	11-31-002 <i>Versione maggiorata: 11-31-002/1</i>	02-04-233	
		23670-09290					
		23670-0R120					
		23670-09210					
		23670-0R070					
		23670-09210					
		23670-0R020					
	23670-09140	095000-623#					
TOYOTA	HILUX (3.0) HIACE DYNA	23670-09380 23670-0L110 23670-30420	295050-081#	11-30-007	11-31-039 <i>Versione maggiorata: 11-31-039/1</i>	02-04-233	
XCMG LIUGONG SHANTUI SDLG	-	D28-001-801+C	095000-679#	11-30-004	11-31-022 <i>Versione maggiorata: 11-31-022/1</i>	02-04-210	
HYUNDAI	COUNTY	33800-4570#	095000-555# 095000-831#	11-30-004	11-31-038 <i>Versione maggiorata: 11-31-038/1</i>	02-04-210	
	MIGHTY						

FILTRO PER CONNETTORE DI MANDATA FILTER FOR DELIVERY CONNECTOR

 CODICE: 14-13-028	PER INIETTORI / FOR INJECTORS			
	095000-560#	095000-624#	095000-679#	095000-778#
	095000-565#	095000-625#	095000-698#	095000-801#
	095000-580#	095000-635#	095000-699#	095000-810#
	095000-581#	095000-636#	095000-750#	23670-0R010
	095000-592#	095000-658#	095000-753#	23670-0R070
	095000-593#	095000-659#	095000-773#	295050-1170
	095000-613#	095000-670#	095000-776#	R2AA-13H50
 CODICE: 16-01-063	<p>PER OPERAZIONI MONTAGGIO / SMONTAGGIO FILTRO UTILIZZARE IL KIT ATTREZZATURA.</p> <p>FOR THE FILTER ASSEMBLING / DISASSEMBLING OPERATIONS USE THE TOOL KIT.</p>			
 CODICE: 16-01-064				

FILTRO A BARBA PER CONNETTORE DI MANDATA BAR FILTER FOR DELIVERY CONNECTOR

LUNGHEZZA / LONG = 27 MM	PER INIETTORI FOR INJECTORS
 CODICE: 14-13-029	095000-056#
	095000-057#
	095000-075#
	095000-094#
	095000-121#
	095000-508#
	095000-521#
	095000-522#
	095000-534#
	095000-545#
 CODICE: 14-13-030	095000-547#
	095000-547#
	095000-551#
	095000-555#
	095000-663#
	095000-717#
	095000-758#
	6140 07L 0127

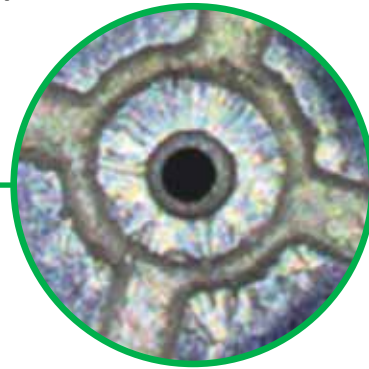
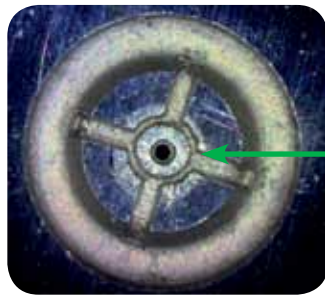


PROBLEMI DELLE VALVOLE VALVES PROBLEMS



QUESTO È UN PROBLEMA NOTATO NELLE VALVOLE CHE CAUSA UN Malfunzionamento nell'iniettore

THIS IS A PROBLEM NOTICED ON THE VALVES CAUSING A MALFUNCTION IN THE INJECTOR



SVITANDO LA GHIERA, POTREMMO CREARE DEI RIGONFIAMENTI SULLA TESTA DELLA VALVOLA, COME MOSTRATO NELLA FIGURA 1

UNSCREWING THE FERRULE, WE COULD CREATE SOME BULGES ON THE VALVE'S HEAD, AS SHOWN IN FIGURE 1

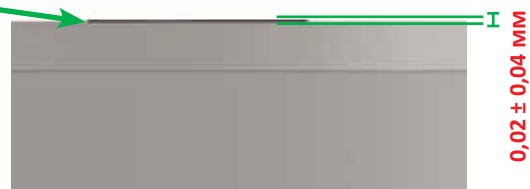
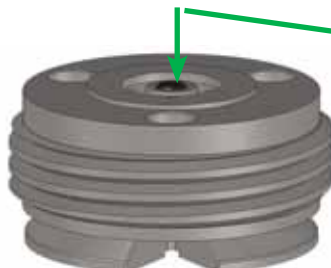


BULGES CAUSED BY UNSCREWING OF THE FERRULE

FIG. 1

QUANDO LA VALVOLA È MONTATA, LA MEZZASFERRA SPORGE DI $0,02 \pm 0,04$ MM RISPETTO ALLA GHIERA

WHEN THE VALVE IS MOUNTED, THE HALF SPHERE SHOULD PROTUDE $0,02 \pm 0,04$ MM COMPARED TO THE FERRULE



$0,02 \pm 0,04$ MM

I RIGONFIAMENTI COMPROMETTONO IL NORMALE FUNZIONAMENTO DELLA MEZZASFERRA, CAUSANDO IL Malfunzionamento della valvola e la sua probabile rottura

BULGES COMPROMISE THE NORMAL FUNCTION OF THE HALF SPHERE, CAUSING A VALVE'S MALFUNCTION AND IT'S PROBABLY DAMAGE.

CONTINUA →